

# MONTHLY MEMBERSHIP PROGRESS REPORT

District 27 B2

Results as of: 3/31/2026

GMT:

LOCATION WISCONSIN

GMT CA

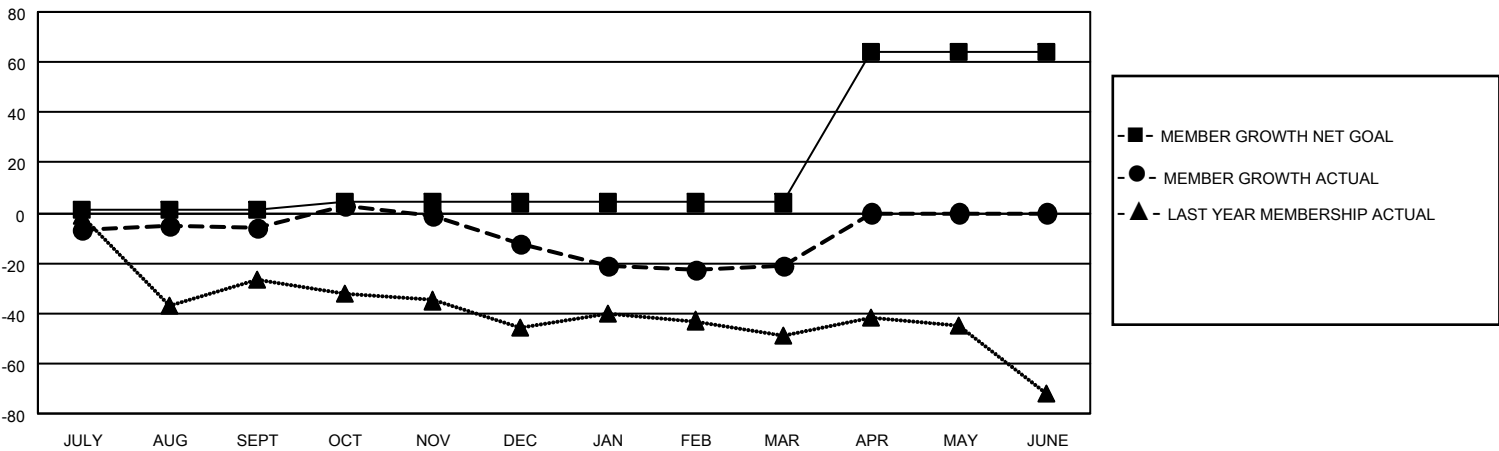
Clubs			
RESULTS FOR 2025-2026			
QUARTER	NEW CLUB GOAL	NEW CLUBS	DROPPED CLUBS
JULY/AUG/SEPT	0	0	0
OCT/NOV/DEC	0	0	0
JAN/FEB/MAR	1	0	0
APR/MAY/JUNE	0	0	0

Members			
RESULTS FOR 2025-2026			
QUARTER	MEMBER GROWTH NET GOAL	MEMBER GROWTH ACTUAL	DROPPED MEMBERS ACTUAL (including transfers)
JULY/AUG/SEPT	1	49	46
OCT/NOV/DEC	3	40	41
JAN/FEB/MAR	0	41	45
APR/MAY/JUNE	60	0	0

GOALS AND ACTUAL NEW CLUBS CUMULATIVE



GOALS AND ACTUAL MEMBERS CUMULATIVE



DROPPED CLUBS: 0	40 CLUBS OF 66 ADDED 1 OR MORE NEW MEMBERS	<b>GENDER DISTRIBUTION</b>
		MALE 1,517 (74.04%)
		FEMALE 532 (25.96%)
<b>DROPPED MEMBERS</b>	<a href="#">CLICK HERE FOR CUMULATIVE MEMBERSHIP DATA</a>	TOTAL FAMILY UNIT MEMBERS 362
DECEASED 14		FAMILY MEMBERS PAYING HALF DUES 182
CLUB CANCELLED 0		
OTHER 118		
<b>TOTAL 132</b>		